

NW Etive

Portable 5G Network Ecosystem



OVERVIEW

The Neutral Wireless Etive is a fully portable 5G network ecosystem, with Release 18 aligned vRAN software stack and integrated mini-5GC for subscriber management and local data breakout. Etive is the perfect solution for lab work and field trials, and also for deploying a pop-up 5G network at events for sports broadcasting, music festivals, and conferences.

The NW Etive is a truly mobile private 5G SA solution, with radio heads, the NW Ness compute platform, antennas and accessories packaged in rugged transport cases ready for rapid deployment. The hardcase containing the radio (pictured right) can be directly pole mounted, and the 5G network can be unpacked and operational in as little as 5 minutes.



SOFTWARE DEFINED RADIO

Our 4TRx software defined radio heads are powered with AMD RFSoc technology, and can be operated in MIMO configurations with bandwidths of up to 100 MHz.

CUSTOMISED FOR YOUR USE CASE

Neutral Wireless is able to offer a range of hardware customisation, depending on your specific use case. While we primarily focus on midband Upper n77 (3800-4100 MHz) and Upper n78 (3600-3800 MHz) radio equipment, other bands are available. We can also supply sector and omni directional antennas (in both single- and multi-band configurations), tripods and transport cases.

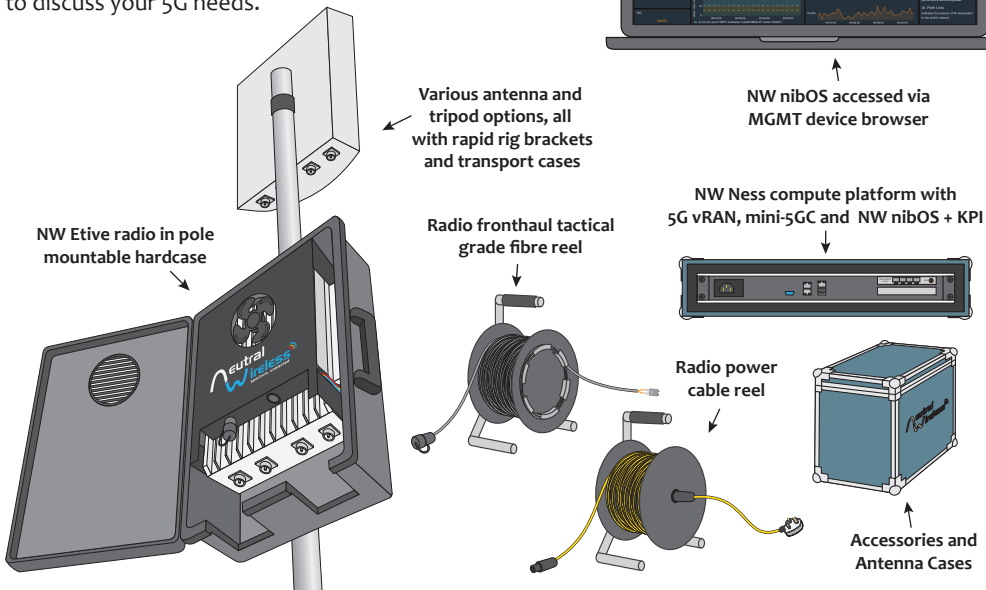
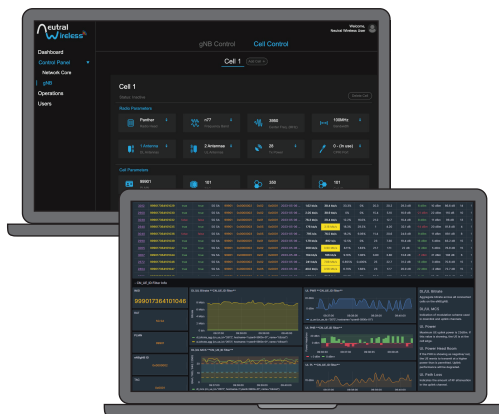
KEY FEATURES

- ▶ Full 5G network ecosystem with a Rel 18 aligned vRAN software stack
- ▶ Contains a mini-5GC for subscriber management and data breakout
- ▶ 4TRx radio operates as a single 4x4 MIMO cell or as dual 2x2 MIMO cells, with bandwidths up to 100MHz
- ▶ Neutral Wireless nibOS software to configure and manage the network
- ▶ Supplied in portable transport cases, perfect for lab work, field trials, and popup 5G networks at events
- ▶ Up to four of our radios can connect to a single vRAN server
- ▶ Proven track record in high profile deployments

nibOS CONFIGURATION AND KPI SOFTWARE

We have developed an easy-to-use interface to configure and monitor the performance of the 5G network. Simply plug a device into the management port, and connect to the web interface to configure network parameters like ARFCNs and transmit powers. The user interface can also be used to monitor KPIs like cell throughputs and individual UE performances.

Please get in touch at info@neutralwireless.com to discuss your 5G needs.



NW Etime Specifications

- NW Ness Compute platform:** High performance server with (4 slot) CPRI card, Linux OS preconfigured with 5G vRAN and 5GC, NW nibeOS configuration + KPI software; short depth 1U in foam shockmount touring case, 580 x 620 x 190mm, 22kg
- NW Etime Radio platform:** 4TRx AMD RFSoc powered radio with 'split 8' CPRI interface; packaged in pole mountable hardcase, 540 x 350 x 135mm, 14.5kg
- Antenna (sector example):** 4-port 13 dBi, 65°H / 20°V beamwidth; packaged in touring case, 460 x 230 x 350mm, 14.5kg

Neutral Wireless Ltd
220 St Vincent Street
Glasgow, G2 5SG
Scotland

www.neutralwireless.com
info@neutralwireless.com

