

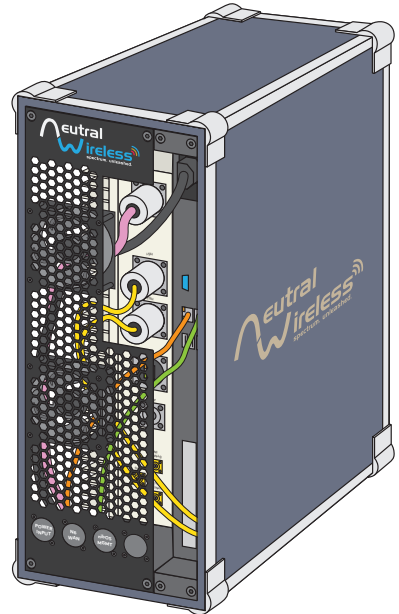
# NW Lomond

## 5G Network in a Box (NIB)

### OVERVIEW

The Neutral Wireless Lomond 5G Network in a Box (NIB) delivers a fully portable 5G basestation, with Release 17 aligned vBBU software stack and integrated mini-5GC for subscriber management and local data breakout. The NIB is the perfect solution for lab work and field trials, and also for deploying a pop-up 5G network at events for sports broadcasting, music festivals, and conferences.

The NW Lomond NIB is a truly mobile private 5G StandAlone solution, with the radio head and NW Ness compute platform packaged in a 4U wheeled case. The 5G network can be unpacked and operational in as little as 5 minutes.



### SOFTWARE DEFINED RADIO

Our 2TRx and 4TRx software defined radio heads are powered with reconfigurable system on chip technology, and can be operated in MIMO configurations with bandwidths of up to 100MHz.

### CUSTOMISED FOR YOUR USE CASE

Neutral Wireless is able to offer a range of NIB hardware customisation, depending on your specific use case(s). While we primarily focus on midband Upper n77 (3800-4100MHz) and Upper n78 (3600-3800MHz) radio equipment, other bands are available. We can also supply sector and omni directional antennas (in both single and multi-band configurations), tripods and transport cases. The NIB features a 10G RJ45 for the N6 backhaul interface, alongside a management and configuration port.

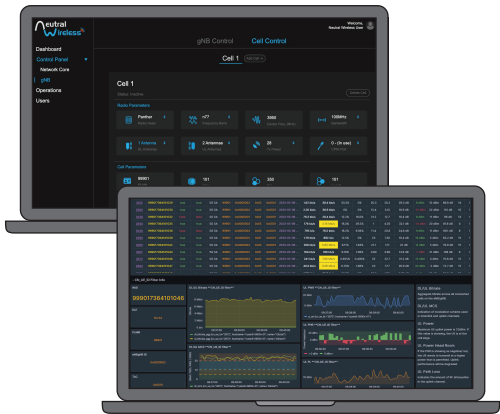
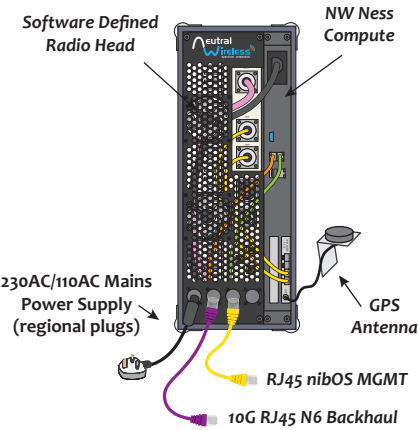
### KEY FEATURES

- ▶ Full 5G basestation in a box with a Rel 17 aligned vRAN software stack
- ▶ Contains a mini-5GC for subscriber management and data breakout
- ▶ 4TRx radio operates as a single 4x4 MIMO cell or as dual 2x2 MIMO cells, with bandwidths up to 100MHz
- ▶ Neutral Wireless nibOS software to configure and manage the NIB
- ▶ Supplied in portable wheeled case, perfect for lab work, field trials, and pop up 5G networks at events
- ▶ The NIB can be paired with up to four of our radios to deploy larger, multi-cell networks

nibOS CONFIGURATION AND KPI SOFTWARE

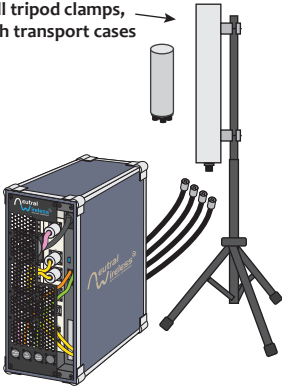
We have developed an easy-to-use interface to configure and monitor the performance of the 5G network. Simply plug a device into the management port, and connect to the web interface to configure network parameters like ARFCNs and transmit powers. The user interface can also be used to monitor KPIs like cell throughputs and individual UE performances.

Alongside the NIB, we can supply a range of 5G UEs and USIM cards for a complete solution. Please get in touch at [info@neutralwireless.com](mailto:info@neutralwireless.com) to discuss your 5G needs.



Various antenna options with rapid install tripod clamps, supplied with transport cases

Antenna Connectors



NW Lomond NIB can be transported like a wheeled suitcase

NW Lomond NIB Specifications

NW Ness Compute platform:	High performance server with (4 slot) CPRI card, Linux OS preconfigured with 5G vRAN and 5GC, NW nibOS configuration + KPI software
Radio platform:	2W 4TRx AMD-Xilinx MPSoC with 'split 8' CPRI interface
Antenna (sector example):	4-port 17.5 dBi, 65°H / 7°V beamwidth
NIB weight and dimensions:	Plastic wheeled case = 58 × 56 × 26 cm / 30kg Rugged wheeled flight case = 57 × 73 × 23 cm / 40kg

Neutral Wireless Ltd  
220 St Vincent Street  
Glasgow, G2 5SG  
Scotland

[www.neutralwireless.com](http://www.neutralwireless.com)  
[info@neutralwireless.com](mailto:info@neutralwireless.com)

